



# MRP-L24 Polyclonal Antibody

<b>Catalog No</b>	YP-Ab-03985
<b>Isotype</b>	IgG
<b>Reactivity</b>	Human;Mouse;Rat
<b>Applications</b>	WB;IHC;IF;ELISA
<b>Gene Name</b>	MRPL24
<b>Protein Name</b>	39S ribosomal protein L24 mitochondrial
<b>Immunogen</b>	The antiserum was produced against synthesized peptide derived from human MRPL24. AA range:101-150
<b>Specificity</b>	MRP-L24 Polyclonal Antibody detects endogenous levels of MRP-L24 protein.
<b>Formulation</b>	Liquid in PBS containing 50% glycerol, 0.5% BSA and 0.02% sodium azide.
<b>Source</b>	Polyclonal, Rabbit,IgG
<b>Purification</b>	The antibody was affinity-purified from rabbit antiserum by affinity-chromatography using epitope-specific immunogen.
<b>Dilution</b>	WB: 1/500 - 1/2000. IHC: 1/100 - 1/300. ELISA: 1/40000.. IF 1:50-200
<b>Concentration</b>	1 mg/ml
<b>Purity</b>	≥90%
<b>Storage Stability</b>	-20°C/1 year
<b>Synonyms</b>	MRPL24; 39S ribosomal protein L24; mitochondrial; L24mt; MRP-L24
<b>Observed Band</b>	32kD
<b>Cell Pathway</b>	Mitochondrion .
<b>Tissue Specificity</b>	Adipose tissue,Bone marrow,Ovary,
<b>Function</b>	similarity:Belongs to the ribosomal protein L24P family.,similarity:Contains 1 KOW domain.,
<b>Background</b>	Mammalian mitochondrial ribosomal proteins are encoded by nuclear genes and help in protein synthesis within the mitochondrion. Mitochondrial ribosomes (mitoribosomes) consist of a small 28S subunit and a large 39S subunit. They have an estimated 75% protein to rRNA composition compared to prokaryotic ribosomes, where this ratio is reversed. Another difference between mammalian mitoribosomes and prokaryotic ribosomes is that the latter contain a 5S rRNA. Among different species, the proteins comprising the mitoribosome differ greatly in sequence, and sometimes in biochemical properties, which prevents easy recognition by sequence homology. This gene encodes a 39S subunit protein which is more than twice the size of its E.coli counterpart (EcoL24). Sequence analysis identified two transcript variants that encode the same protein. [provided by RefSeq, Jul 2008],



**matters needing attention**

Avoid repeated freezing and thawing!

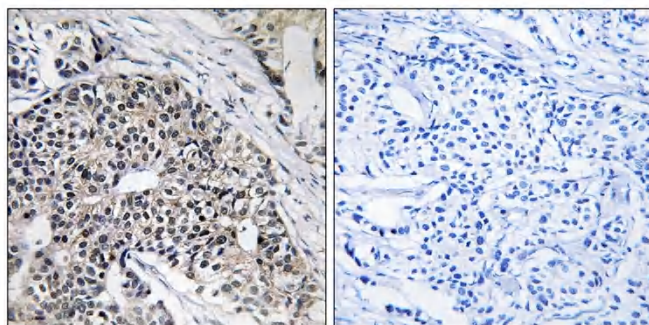
**Usage suggestions**

This product can be used in immunological reaction related experiments. For more information, please consult technical personnel.

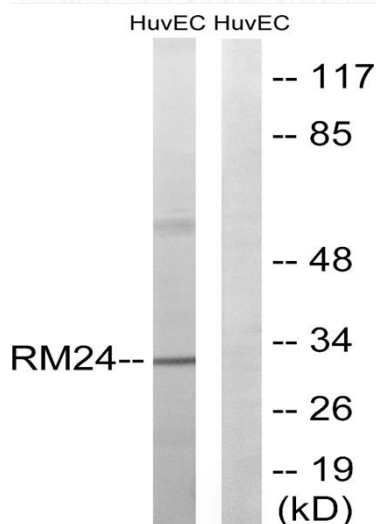
**Products Images**



Western Blot analysis of various cells using MRP-L24 Polyclonal Antibody diluted at 1:2000



Immunohistochemistry analysis of paraffin-embedded human breast carcinoma tissue, using MRPL24 Antibody. The picture on the right is blocked with the synthesized peptide.



Western blot analysis of lysates from HUVEC cells, using MRPL24 Antibody. The lane on the right is blocked with the synthesized peptide.